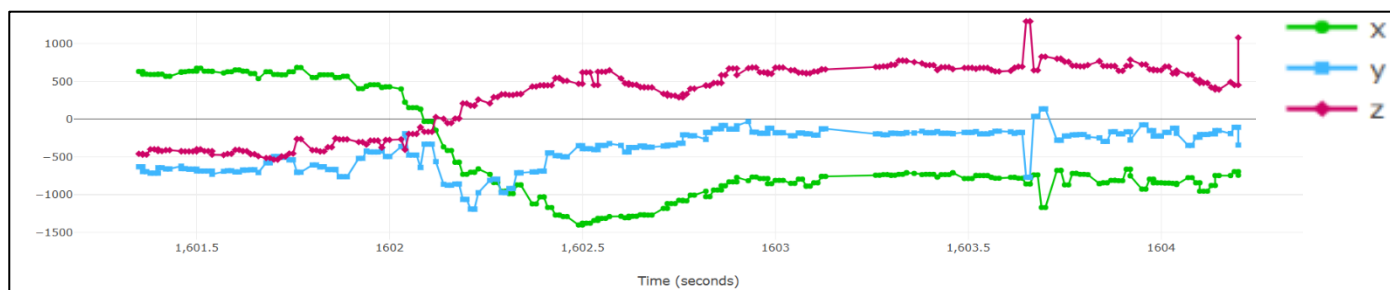


Ri Off the Shelf Masterclass: Bats to Bytes

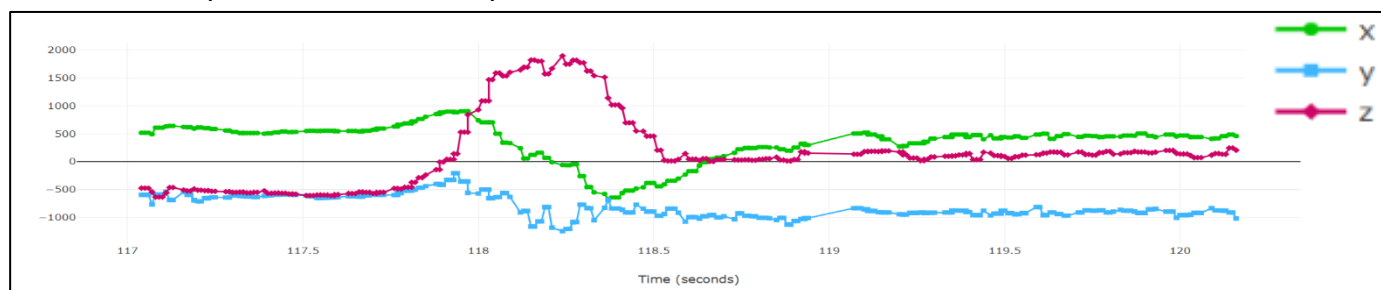
Worksheet 1 – Batting Challenge Data Collection

Take it in turns to swing the bat for each of the three types of shot: a straight drive, a defensive block, and a pull shot. For each attempt, record the type of shot, then analyse the data from the micro:bit. Each person in your team should give their opinion on which graph the data matches the closest. Once everyone in your team has completed each shot, decide as a team which type of shot is shown by each graph.

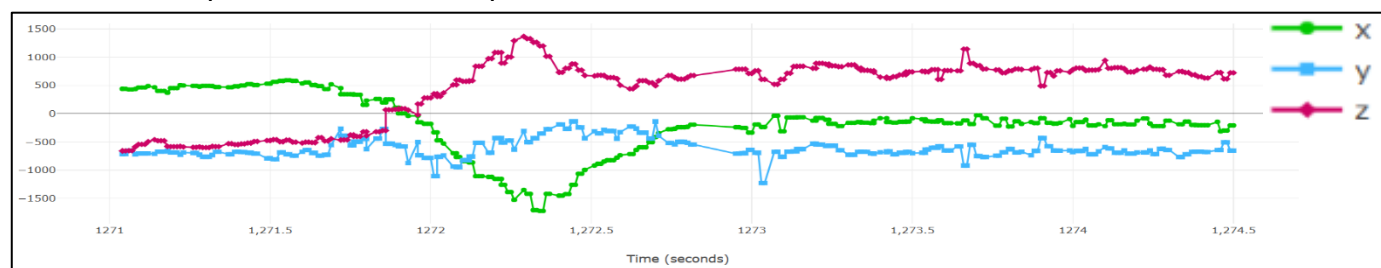
Batter Name	Type of shot (Drive / Block / Pull)	Which graph does the data match the closest... A, B, or C?		
		Person 1	Person 2	Person 3



Above is Graph A. We think Graph A shows a shot.



Above is Graph B. We think Graph B shows a shot.



Above is Graph C. We think Graph C shows a shot.