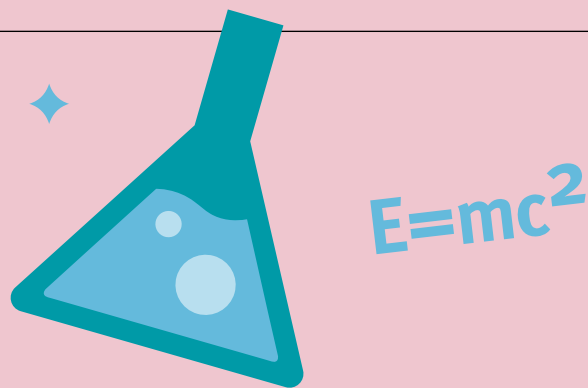
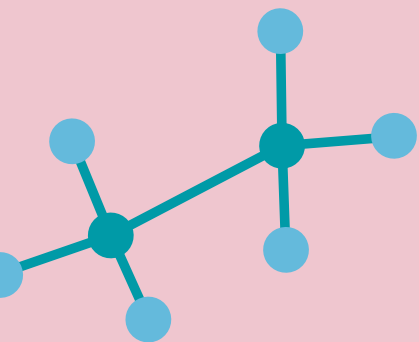


## Annual review 2022



# Contents



**02** Chair and  
Director's welcome

**03** Our impact

**07** Inspiring the next  
generation

**19** Increasing our  
reach

**27** Supporting our  
charity

**34** Finances and  
governance

**36** Thank you



# Welcome

In 2022 we began to write a new chapter in the long and distinguished history of the Royal Institution.

Having driven year-on-year growth before the pandemic, during it we have successfully created new opportunities for people of all ages and backgrounds to engage with science. We have also used the time to re-examine what we do and how we do it.

Because the world has changed. While our futures still depend on scientific progress being informed by the society it is intended to serve, people's perceptions of science have changed. We find ourselves in a world of new challenges, but also new opportunities.

So we were pleased to be able to successfully reintroduce the full range of pre-pandemic Ri activities. Our Discourses – the longest-running series of science lectures in the world – returned in May and by the Autumn we had a full programme of these special public Theatre talks in place once more. Our popular Holiday Workshops returned during the Summer, with just under 100 sessions for curious young people aged 7–18, with 120 free places available to families benefitting from support for their children to engage with STEM subjects.

At the same time, we extended our reach across the UK and globally. Applications for our Science in Schools grants were at the second highest level ever, with a total of 220 free school visits from our professional science presenters given for the current academic year. We built on our new livestream programme, offering more hybrid talks where the speaker and audience in our Theatre were joined by thousands from around the world. A new website helped make our special brand of Ri science more accessible, while our YouTube channel grew to 1.3 million subscribers.

And in Google, The Farr Foundation and the Turing Institute, we welcomed significant new funders to our existing community of supporters, each sharing in the belief that our charitable purpose is more important today than at any point in our history. Our thanks go to them all, for we could not have achieved what we have without their generosity.

Our staff too – alongside our Trustees, Members, Patrons, volunteers and many loyal supporters – worked incredibly hard to see the Ri emerge from the pandemic in a strong position. Katherine and I are grateful to them, and proud of what we have done together.

We are also pleased with the development of Undaunted, in collaboration with Imperial, and with our growing collaboration with the London Institute for Mathematical Sciences, now based at the Ri; while the long tradition of in-house scientific research is maintained by UCL, working at the interface of nano-science and medicine.

So today, we are actively seeking new funders to help us grow; to help us develop our new strategy and fill the pages of our new chapter. Together we can make the Ri more inclusive and accessible, welcoming new and more diverse audiences. Together we can make a demonstrable difference for schools in disadvantaged areas, championing science education in school and in the home. And together we can grow the public's exploration of the ways in which science shapes the world around us.

With a new Chair and a fresh Board of Trustees, a new Director and a new Executive Team, we have fresh impetus to implement positive change. We invite you to join us as we begin a new chapter at the Ri.



**Sir Richard Catlow**  
Chair  
The Royal Institution



**Katherine Mathieson**  
Director  
The Royal Institution



Our impact

---

# Our impact

‘It is fantastic to have the opportunity to allow children with Special Educational Needs to participate in STEM workshops’

Teacher, Ri Science in Schools

## Science in Schools

# 94%

of teachers said students’ knowledge increased following a Science in Schools visit; 85% said that attitudes to science had become more positive

‘I have no doubt that our young people learned an awful lot last night and will remember taking part in this for a long time to come’

Teacher, Ri CHRISTMAS LECTURES

## CHRISTMAS LECTURES

# 2.9m

viewers of the CHRISTMAS LECTURES with Dame Sue Black

‘Many thanks for an excellent lecture, my sons were really inspired’

Parent, Ri Family Programme

‘Really relevant and up to date. So much excitement and discussion from the group’

Teacher using Ri Big Cat Collins books

## Public programme

# 42k+

people exploring science through our public talks

‘It’s this type of programme that encourages youngsters into science careers where critical thinking and approach really matters’

Parent, Ri CHRISTMAS LECTURES

## Ri archive

# 500+

science and history researchers supported through access to the Ri archive

‘Causeway are proud to be a longstanding major supporter of the Royal Institution, partnering to give young people from all backgrounds opportunities to develop their skills in science and engineering’

Leisa Docherty, Causeway Technologies

## Ri Masterclasses

# 5.3k

students delving deeply into STEM subjects through 550 free Ri Masterclass sessions

## GLA support

# £4.35m

grant awarded from the GLA to help refurbish the Ri as an environmental exemplar building

‘I really appreciate everything you and your team are doing to bring the Royal Institution’s world-class expertise and training into our schools’

Steve Rotherham, Mayor of the Liverpool City Region

## Science in Schools

# 98k

students inspired by our trained Science in Schools presenters, at 328 UK state-funded schools

‘We strive to partner with organisations who authentically reflect values of diversity and inclusivity, we have experienced that with you’

Ri Masterclasses Partner, Maths Explorers

## YouTube

# 172k

new subscribers to our YouTube channel, taking total subscribers to over 1.3 million

‘Pitched at the right level. Children loved it. Seriously – great learning experience’

Teacher, Ri LYSC

‘Thank goodness for the @Ri\_Science and others putting their lectures on YouTube’

Ri YouTube viewer

## Humphry Davy project

# 70

Humphry Davy notebooks being digitised through a mass public participation project

‘That was awesome. I want to be a scientist when I’m big’

Student, Science in Schools

## YouTube

# 30m

video views on the Ri YouTube channel in 2022, equating to over 8 million hours of watch time

‘It was good to see how many of the visiting speakers were women which can only encourage women in science’

Parent, Ri CHRISTMAS LECTURES

## Science in Schools

# 56%

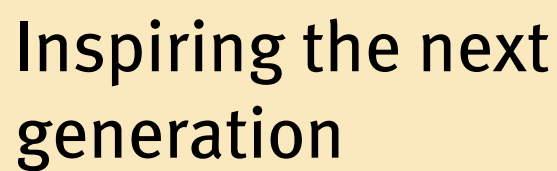
growth versus 2021, in the number of grant-funded Science in Schools visits; 93% to schools in the 40% most deprived areas of the UK





Dame Sue Black gives the 194th series of CHRISTMAS LECTURES from the Royal Institution







# Inspiring the next generation

**Climate change, healthcare, food security, pandemic prevention. With science harnessing the power to transform lives – and holding answers to the world's greatest challenges – it is vital that we inspire the next generation of scientists.**

Supporting the UK's national curriculum in schools, Ri educational programmes are designed to ignite a sense of wonder and excitement with science; and then to develop and sustain a sense of belonging, of feeling welcome to take that excitement further.

Among the 110,000+ 7–18 year-olds who engaged with Ri science throughout the year, we may well find the Faraday, Curie and Attenborough of tomorrow.

# The L'Oréal Young Scientist Centre

Just a few metres from where Humphry Davy first isolated 10 elements of the Periodic Table and Michael Faraday gave the world the power to generate electricity, budding scientists of tomorrow enjoy hands-on scientific exploration in our basement laboratory.

With the generous support of L'Oréal UK and Ireland – now entering its 13th year – in 2022 we welcomed over 4000 young people to the [L'Oréal Young Scientist Centre](#). Over half attended a workshop with us for the first time, marking a return to growth following the pandemic; while well over two-thirds were from state-funded schools. Each stopped being a pupil and became instead, a scientist for the day.

**1600 lip balms were set, 3200 bath bombs fizzed, and 750 strands of DNA were extracted. Curiosity-driven learning, the space to experiment, and science with a real-world application.**



# Science in Schools

Every year, our **Science in Schools programme** reaches students most in need of STEM support across the UK.

In 2022, our trained presenters inspired 98,000 students at 328 schools – from Dundee to Plymouth and everywhere in between – representing growth of just under 60% versus the previous year. Over 4000 teachers received continuous professional development training, with 89% reporting that their teaching had changed as a result.

Of the schools we supported, 250 benefitted from a free Science in Schools package thanks to our **grant programme**, generously funded via new support from Bain Capital, The Kusuma Trust, The Clothworkers' Foundation, The Farr Foundation, and The JS Cohen Foundation, in addition to ongoing support from The Gillespie Endowment.

Over 90% of schools receiving our grant funding were in the 40% most deprived areas of the UK, with nearly 70% in the lowest 20%. While for the first time this year, CHRISTMAS LECTURES-themed activity boxes were distributed at foodbanks and GP surgeries, supporting even more children to engage with STEM subjects.



---

# Ri Masterclasses

**Our long-running [Ri Masterclasses](#) offer an invaluable opportunity for keen students to explore maths and computer science at a deeper level than is possible in the classroom. Since 1981 over 110,000 students have graduated from the programme.**

In 2022 we ran over 550 free Ri Masterclass sessions, engaging more than 5300 students; each nominated by their teacher as someone with an emerging interest in science to be nurtured, but who may not be able to access similar paid-for opportunities. We grew the number of primary-age sessions run by sixth form students, who energetically engaged their young learners; and gained some valuable communications and teaching skills in return.

We continued our partnership with Maths Explorers, connecting disadvantaged and ethnic minority students to maths in positive environments; while we welcomed students with autism to Masterclasses for the first time.

And in welcoming Google as generous new funders and experienced collaborators on our Computer Science Masterclasses, we increased our reach in disadvantaged areas of London. In all, Masterclasses grew by over 70% as we took a further leap towards pre-pandemic levels of delivery, proving the enduring value of this popular Ri programme.

We are grateful to our community of funders – Causeway Technologies, The Worshipful Company of Actuaries, DS Smith Charitable Foundation and AG Manly Trust – and many, many volunteers throughout the UK, without whom this simply wouldn't have been possible.



# A summer of science

We were delighted to be able to reintroduce our popular [Holiday Workshops](#) in 2022, after a two-year break enforced by the pandemic. Over 100 individual workshops were run during the year. The Ri buzzed again with the sound of excited scientists of tomorrow.

Covering all areas of science including engineering, computer science and maths, nearly 1400 young people aged 7–18 enjoyed an age-appropriate, deep scientific exploration with like-minded peers. And thanks to new support from Westminster City Council and The Potential Trust, we were able to offer nearly 120 fully funded places to families from London's disadvantaged communities, whose children benefit most from additional support to engage with science.

Also during the Summer, we partnered with the Association of British Science Writers and the BBC, to launch a new annual prize for young science writers. At a time when the rise of disinformation, disproportionately consumed online by young people, is of increasing concern to children's charities worldwide, we shared a desire to get students at non-selective, state-funded schools thinking and writing about the big questions in STEM.

And when the 2022 winner chosen from over 100 entries – fourteen-year-old Zara Hussan – delivered her essay to an Ri Theatre full of her peers, as our event host noted, she proudly became the latest in a long and distinguished line of scientists to engage the public with their research at the Royal Institution.







# CHRISTMAS LECTURES

With Professor Dame Sue Black

For the 2022 [\*\*CHRISTMAS LECTURES from the Royal Institution\*\*](#), we were delighted to invite one of the world's leading forensic investigators to take centre stage in our iconic Theatre.

Dame Sue Black, an anthropologist, used stand-out cases from her remarkable career – including as the UK's lead forensic investigator in Kosovo – to share the secrets of the real-life scientific detective process she uses to identify both the dead and the living.

Together with our rapt Theatre audience of 11–17 year olds – which included free places for students from schools in disadvantaged areas supported by the Ri throughout the year – we revealed the once-living person hidden in the bones of a thousand-year-old skeleton. We uncovered unseen evidence from a crime scene; we saw the meticulous preparation needed by forensic scientists to withstand the most probing courtroom cross-examination; and we asked challenging questions about the future of forensics.

Feedback tells us that 97% of our young Theatre audience felt their understanding of forensics had increased, while 72% said their understanding of science's place in our lives had also increased.

Thanks to the generous contribution of our 2022 CHRISTMAS LECTURES supporters – UKRI, Agilent Technologies and Horiba – 2.9 million people joined us on BBC Four and iPlayer. Many more people will enjoy Dame Sue's Lectures on iPlayer, and on the Ri website, where they are available for everyone, anywhere in the world, forever.



#### Images left to right:

**Top:** Ri Head of Demos Dan Plane holds court in one of 96 Holiday Workshops during the summer; our museum is open every weekday, to everyone, for free.

**Middle:** Bubbling over with excitement, and science, in our L'Oréal Young Scientist Centre; igniting a passion for science through our Science In Schools programme.

**Bottom:** More Science in Schools and more scientists of the future.



Images left to right:

**Top:** TV CSI meets the real CSI in the 2022 CHRISTMAS LECTURES.

**Middle:** The most important and iconic items in our collection are on permanent display in our free museum; science fun with like-minded new friends at Ri Holiday Workshops.

**Bottom:** Anyone who buys official Ri merchandise online makes a direct contribution to our charity; mathematician Hannah Fry, just one of many leading science communicators to engage a public audience in our famous Theatre.





Increasing  
our reach

---



# Increasing our reach

Every year we work to grow the number of people we reach through our public engagement activities – in person, at the Ri, throughout the UK and around the world.

**And we seek to make our audience more diverse, celebrating difference, respecting and valuing everyone, and promoting equal access among the many different communities that enjoy exploring science with us.**

Our purpose today remains the same as it was in 1799 – to engage public audiences with science. And we have a range of activities and channels – notably our livestreams, social media and popular YouTube channel – that enable us to do so in numbers that could only have been dreamt of 200 years ago.

# Public science talks

In 2022 we welcomed audiences to our Theatre and online for the first full year of **Ri public science talks** since the beginning of the pandemic.

Our historic Ri Discourses – the longest-running series of science lectures in the world – returned in May, with our new Chair, Sir Richard Catlow exploring his work as a materials chemist with a live Theatre audience which came together with an international audience online.

Scientists and commentators of the calibre of disability campaigner Sir Tom Shakespeare and quantum scientist Alexandra Olaya-Castro followed as our Discourse speakers, while our wider Theatre programme covered every area of science in our lives from dark matter, to the future of self-driving cars, to emotionally intelligent technology. Our Family talks proved as popular as ever, with over 5000 young people and their parents enjoying an evening of STEM exploration in our Theatre.

Also during the year we hosted our first Ri Short Course in over two years with a sold-out introduction to quantum theory, and saw a welcome return for Ri Family Fun Days providing valuable parental support for science education outside of the classroom. And in September we began working with Tickets for Good to offer 50 free tickets to the UK's NHS workers, to every Ri Theatre event.

In all, an audience of over 42,000 explored science through our talks in 2022, a year in which we cemented livestream events as a core feature of our programme. We were pleased to be able to showcase the work of internationally-based scientists who might not otherwise have been able to share their research at the Ri, while engaging tens of thousands more people throughout the UK and around the world.







# Digital engagement

Our popular [YouTube channel](#) provides a platform to share Ri science worldwide, extending the life of our Theatre and livestream talks and substantially increasing their reach, with over 80% of our audience joining us from outside of the UK.

Thanks to careful planning and thoughtful content curation, in 2022 we significantly grew this audience again. Over 172,000 science lovers chose to ‘click the subscribe button’, taking total Ri subscribers to 1.3 million, from around the world, by the end of the year. The upload of 76 new videos helped make 2022 our most successful year ever, with 30 million video views, equating to 8 million hours of watch time.

On social media our posts were viewed 55 million times during the year, with more than 3.6 million interactions helping us to an engagement rate of nearly 7%, significantly exceeding industry benchmarks. And while Facebook remained our most popular channel, we drove an increase in our younger audiences on TikTok, seeing a 58% increase in views of our video content.

And in February, the launch of a [new Ri website](#) helped make all of our digital content more engaging and accessible. While we were unable to assess all visitors due to our commitment to GDPR compliance, we know from our hosting company that unique visits were considerably greater than the 1 million we recorded in house. We are grateful for the generous support of Simon Godwin and the Godwin Family in creating the platform on which we can build our future digital outreach.



# Ri heritage and collections

Every year, we invest in caring for **our important historical collection** of manuscripts, correspondence and scientific apparatus. Tyndall's radiant heat apparatus, Dewar's original vacuum flask, Davy's miners' lamps, Porter's lasers; each item illuminates over 200 years in the UK's rich heritage of scientific advance. We preserve our collection on behalf of the nation and share it with the world.

Our most significant items are on permanent display in our free museum, and during the year we were pleased to see an increase in visitor numbers, albeit still affected by international Covid restrictions. We gave research access and support to over 500 scientists, historians, university students, documentary researchers and other heritage organisations such as the National Trust.

Also in 2022, we showcased relevant items from our collection to illustrate Ri public Theatre talks – notably during a six-month sabbatical by visiting Harvard Professor David Ricketts, who investigated and then recreated Faraday's development of the world's first electric motor in 1821 – and via a special episode of BBC Radio Four's 'Kitchen Cabinet'.

At the same time, we continued to partner with Lancaster University in a mass public participation project to transcribe and digitise all 70 of Humphry Davy's notebooks held at the Ri, a new display of CHRISTMAS LECTURES artefacts was installed in our Demonstration Room, and we supported the history of science research of our second cohort of **Ri Freer Trust Fellows**.



# Growth through partnerships

**Throughout the year we extended our impact through partnerships at home and abroad with organisations whose aims and values align with our own.**

We formalised our partnership with Imperial to tackle the causes and effects of climate change through a centre for climate change innovation. We're grateful to the Greater London Authority for the £4.35 million funding awarded to environmentally retrofit the Ri, announced in our Theatre by Deputy Mayor of London, Shirley Rodrigues, at the same time as '[Undaunted](#)' was unveiled as the new name for the Centre.

We supported the Croucher Foundation's Science Week in Hong Kong with a series of school shows watched by over 20,000 pupils; as well as the Singapore Science Centre's UNTAME festival with a STAR Lecture delivered by 2020 Christmas Lecturer Helen Czerski and enjoyed by over 60,000 people. At the same time we extended our reach directly to Iran, Afghanistan and Tajikistan with the 2021 CHRISTMAS LECTURES licenced via BBC Persia.

We worked closely with the London Institute for Mathematical Sciences and University College London with a series of public Theatre talks from their scientists, all of whom are continuing the two-centuries-old legacy of scientific research at the Ri.

With significant funding from the Open Society Foundation, we continued to support the Pseudoscience Group in tackling the rise of misinformation and disinformation online and in the media. A research project to identify motivations for consuming anti-vaccination sentiment, culminated in a video on the popular 'Philosophy Tube' channel with nearly 1.2 million views and, importantly, nearly 7000 comments indicating behaviour change among the vaccine-hesitant audience.





# Supporting our charity

**We are grateful to everyone who helped us make a difference in 2022, contributing to a shared success.**

The valuable contributions we receive from our Members, Patrons, corporate partners and trusts and foundations help us deliver our charitable activities, at the Ri and throughout the UK.

We see the impact of our work every day: young people inspired by our education programmes, adults enjoying our public lectures, school groups enthused by visits to our L'Oréal Young Scientist Centre and our free museum.

This support has been particularly valuable as we emerge from the impact of Covid-19, helping ensure a successful return to a full pre-pandemic programme of activities, while also developing key areas such as digital engagement via livestream talks – now integrated as core features of our programme – further helping us to reach more people nationwide.

It is thanks to this enduring support for the Ri, from so many different communities, that we are able to realise our ambitious plans to connect even more people with science.

# Commercial activity to support our charity

As an independent charity, our support for schools in disadvantaged areas of the UK and our activities to connect as many families and individuals as possible with science are reliant on the income we are able to raise ourselves.

In early 2022 we began to welcome visitors to our [new online merchandise store](#), developed in partnership with ethical retailer Teemill. We developed our Ri science-inspired range throughout the year, and supplemented online income via an enhanced offer of small gifts available on-site at the Ri.

Through sales of our ‘Schrödinger’s Cat’ or ‘Standard Model’ t-shirts, or our unique CHRISTMAS LECTURES designs, we enjoyed a successful first year of trading, exceeding the target set for merchandise income. Also during the year we published three new science books in the Harper Collins ‘Big Cat’ series, designed specifically to support younger children in learning to read.

And having grown our small Venue Hire Team during the summer, we ensured we were well-placed to meet returning demand for in-person [private events at the Ri](#). At the same time, we were also pleased to make further progress in aligning our venue hire clients with our charitable mission, welcoming many organisations advancing science and technology, and hosting events to support other charities.

**Every organisation holding a private event in our grand Georgian rooms; every individual choosing to buy Ri merchandise online and everyone leaving the Ri with a cherished memento of their visit, directly supported the success of our charitable mission during the year. Our thanks go to them all.**





WELCOME TO THE  
FUTURE

Nothing is too wonderful to be true  
It be consistent with the laws of nature

WELCOME TO THE  
FUTURE

WELCOME TO THE  
FUTURE

WELCOME TO THE  
FUTURE



# Accessible membership for all

**With a return to a full programme of talks and events at the Ri, we were pleased to see our community of Members begin to grow again, reaching a total of 3200 like-minded science enthusiasts of all ages by the end of the year.**

At the same time, those who chose to renew their annual membership – 80% of adult Members overall – was at its highest level ever, significantly ahead of industry benchmarks for cultural membership retention.

We were also pleased to welcome 15 new Patrons during the year, each of whom demonstrated a deeper connection with the Ri through their valuable support. Included in their number was Sir Richard Sykes, who became the first to be awarded an honorary lifetime Patronage, in recognition of 12 years' service as Chair of Trustees.

The welcome return of a special Members' and Patrons' Experience night in July, this time featuring all the fun of the fayre in 'Circus science', was just one small thank you to all those who began, or continued, their support for the Ri during the year.

Because our [Members and Patrons](#) sit at the heart of the Ri. They make a valuable contribution, without which our charitable engagement with schools, or preservation of our archive and collection, would not be possible. Like us, they recognise the importance of welcoming everyone to explore science.

So it was that we took time during the year to listen to their experiences of membership at the Ri, as an important contribution to the first substantial review of Ri Membership since 2015.

Our review is due to complete early in the new year, and throughout 2023 we look forward to refining our membership offer; to making membership even more accessible; and to deepening the relationship we hold with our loyal community.

# A new chapter

**Science is transformative. It shapes our world and we believe everyone should have a say in how it is used in our lives. As such, many would argue that our purpose is more important today than at any point in our long and renowned history.**

In early 2023 we will launch our new five-year strategy for growth, to welcome many more people to our world-famous brand of Ri science than ever before; extending our reach throughout the UK and around the world through innovative science engagement in person, our partnership networks, and through greater use of digital content.

And as we grow, we will continue to make a demonstrable difference for schools in disadvantaged areas; to champion science education in school and in the home; and to grow the public's exploration of the ways in which science shapes the world around us.

We will make the Ri as accessible as possible, to welcome new and more diverse audiences, and to increase celebration of the contribution of those who are under-represented in science. And we will support and champion our talented staff and our new collective values.

And as we look forward with confidence, we will remember the words of Sir David Attenborough who captured the essence of our mission perfectly when he said: **“An understanding and appreciation of science is more important than it ever was. It follows that the Ri couldn't be more important.”**



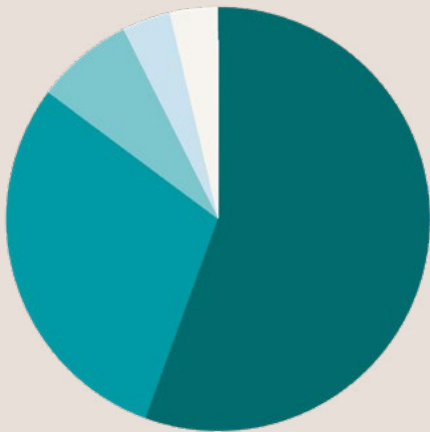




# Our finances

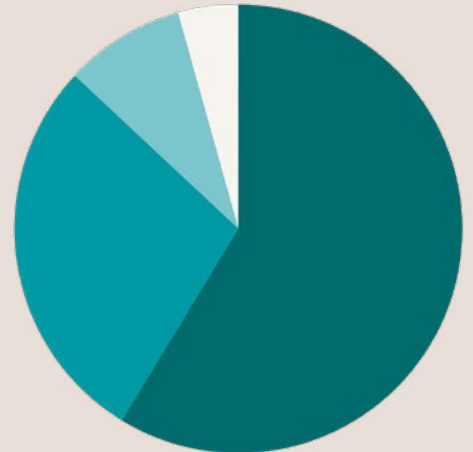
We are pleased to report that during the 2021-22 financial year, we took positive steps towards pre-pandemic income levels, with the contribution from our Venue Hire activities increasing particularly strongly towards the end of the year; while we anticipate receiving the balance of a significant legacy donation in the 2022-23 financial year. Repayment of a £1.5m loan via the Government's Culture Recovery Fund received, like other cultural institutions, to protect against the impact of the pandemic, is due to begin in March 2023.

Our total income (unrestricted and restricted) in the 2021-22 financial year was £4.6m. We generated £2.7m of trading income, and £1.9m in voluntary income through membership, events, and fundraising. Due to the continued impact of Covid-19 we incurred an operating deficit of £0.8m, the same level of deficit that we had in 2020-21.



**Left: How we spend our money.**  
**Total expenditure 2021-22: £5.4m**  
 ● Education programme: £3m  
 ● Trading activities: £1.6m  
 ● Raising funds: £0.4m  
 ● CHRISTMAS LECTURES: £0.2m  
 ● Heritage: £0.2m

**Right: How we fund our work.**  
**Total income 2021-22: £4.6m**  
 ● Trading: £2.7m  
 ● Grants and events: £1.3m  
 ● Donations and legacies: £0.4m  
 ● Membership and subscriptions: £0.2m



# Our governance

The Royal Institution was founded in 1799 and received its Royal Charter on 13 January 1800. We are an independent Royal Charter charity, governed by our Byelaws and governing documents. In 2022 our Chair, Sir Richard Sykes retired from the position after 12 years of service to the Ri and Sir Richard Catlow was appointed as Chair.

Our Trustees number 13 in total, nine elected by the membership of the Ri and four appointed by the Board. The Trustees ensure the Ri carries out its charitable purposes for public benefit and complies with its governing documents. Trustees have overall responsibility for managing the business of the Institution; setting strategic direction and objectives; safeguarding the Institution's assets; overseeing all significant capital expenditure and relevant policies.

The Board meets a minimum of four times per year and is supported by four standing Committees; the Audit and Risk, Finance, Nominations, and Remuneration Committees.

---

## Royal Patron –

The former Prince of Wales was our Royal Patron

---

## President –

HRH The Duke of Kent

---

## Honorary Vice President –

Sir John Ritblat

---

## Trustees –

Sir Richard Sykes (Chair; retired May 2022)

Sir Richard Catlow (Chair; appointed May 2022)

Prof Alison Woollard (Vice Chair)

Dr Sophie Forgan

Simon Godwin

Kate Hamilton

Sir Roland Jackson (retired May 2022)

John Krumins (retired May 2022)

Dr Suze Kundu

Renato Lulia-Jacob

Rt Hon, Lady Estelle Morris, Baroness of Yardley  
(appointed May 2022)

Vincent Nobel (elected May 2022)

Chris Potter

Prof Angela Seddon

Prof Jack Stilgoe (appointed May 2022)

Harriet Wallace (appointed May 2022)

---

# Thank you

We would like to extend a huge thank you to all those who generously support the charitable work of the Royal Institution. Our Trustees, Patrons, Members, donors, corporate supporters, volunteers and visitors give us their time and expertise so freely, make an invaluable financial contribution, or both.

As an independent charity we rely on your support to encourage people of all ages to begin their lifelong journey with science. We look forward to continuing our important mission with you in 2023.

---

## Major supporters –

Arts Council England via the Culture Recovery Fund	The Clothworkers' Foundation IBM
Bain Capital Children's Fund Europe	L'Oréal UK & Ireland
Causeway Technologies	Simon Godwin

---

## Director's Circle Patrons –

Luca and Leila Bassi	Simon Godwin
Dr M Bowie-Krige	W & M Seddon
Cristóbal Conde	

---

## Faraday Circle Patrons –

Azad Ayub	Sir Desmond Pitcher
James del Favero	Hank Roberts
The Faraday Foundation	

---

## Diffusion Circle Patrons –

Nicholas and Tobe Aleksander	Duncan and Lynn McInnes
Stephen Corben	Karen and Gordon Moore
Paul Drake	Sriram Nadathur
The de Laszlo Foundation	Martin Pidd
George Maher	

---

## Magnetic Circle Patrons –

Iain Bratchie	Katharine Medlow
Stephen Dias	Ralph Rayner
Florian Dommert	E C Renton
Karen Hodson	Sir John Ritblat
Jerry Horwood	Dame Theresa Sackler
Chris Lowe	
	All of our Electric Circle Patrons and all who wish to remain anonymous.

---

## Honorary Lifetime Patron –

Sir Richard Sykes

---

## Additional thanks –

We would also like to thank all those who have named a seat in our historic Theatre through our 200 seats for 200 years campaign, with a special thank you to:	Azad Ayub James del Favero The Faraday Foundation Renato Lulia-Jacob Simon Godwin
--	---

---

## Corporate partners –

Agilent Technologies Foundation	KPMG
The Alan Turing Institute	Reckitt Global Hygiene Institute
AWE plc	Sonnedix
Faraday Institution	University of Portsmouth
Google	UK Research and Innovation
Horiba	

---

## Trust & Foundations –

Company of Actuaries Charitable Trust	The John S Cohen Foundation
AG Manly Charitable Trust	GM Morrison Charitable Trust
AM McGreevy No. 5 Charitable Settlement	The Godwin Family
The Bernard Gold Foundation	Kusuma Trust UK
	LG Harris Trust
	The Rose Foundation

---

## Other partnerships –

The Association of British Science Writers	The London Institute of Mathematical Sciences
The Association of Science Discovery Centres	The National Education Union
The Grantham Institute for Climate Change	The Open Society Foundation
	The Pseudoscience Group
	STEM Learning

---



